

List of Speakers – Copenhagen Impact Investing Days (10 June 2021)

With financial support from Abacus Medicine, Innovations Fonden and www.nfqs.dk

Thomas Bokström

Project manager, Research
Institutes of Sweden (RISE)



Tomas Bokström works as a project manager in the Research Institutes of Sweden (RISE) where he leads the Social & Health Impact Center (SHIC) seeking to develop new preventive welfare solutions through the utilization of outcome-based contracts financing models.

He holds a Masters degree in European Studies and Political Science from the University of Gothenburg and a degree in Engineering Physics from Chalmers University of Technology.

Sze Long (Cyron) CHAN

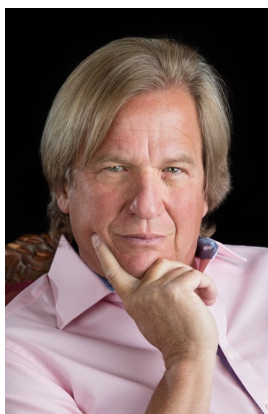
Project Manager,
The DO School, Hong Kong



Cyron CHAN is an expert on launching impact startup incubation programs in the Higher Education sector in Hong Kong. His focus is on nurturing graduated students to start their business. He is dedicated to coach startup teams, connect useful resources, arrange training and workshop, and business development as part of startup team members.

Jed Emerson

Independent Strategic Advisor to
Impact Investors, New York, USA



Jed Emerson is an internationally recognized leader in impact investing. He is a strategic advisor to ultra-high net worth families and investment firms working to implement the best impact investing approaches. As co-author of the first book on the topic and author of *The Purpose of Capital: Elements of Impact, Financial Flows and Natural Being*, over the past three decades he has led the field in thought and practice.

He convened the first working group on Social Return on Investment (SROI) measurement, has served as founding director of venture philanthropy and social ventures, and was a founding board member of Pacific Community Ventures, an early impact investing fund. He has held faculty appointments at Stanford, Harvard and Oxford Business Schools and is a Senior Research Fellow at the University of Heidelberg.

Richard Georg Engström

Founder & Chairman

IMPACT X

The Impact Business Index
Copenhagen (DK)

Richard is a serial entrepreneur in technology and sustainable business in the cultural and political sector. Since the mid 90's he has been part of the Nordic and international ecosystem of start-ups and venture financing. Today he works as an advisor, entrepreneur and investor in solutions with the purpose to improve or systemically change the world to be more balanced, equal and prosperous for each and everyone.

In 2015, Richard launched the One Initiative. Each year The One Initiative conducts the Nordic Impact Business Summit – a "by-invitation-only" event in Copenhagen. They match a selection of 'Nordic Top 50 Impact Companies' with international investors that have appetite for green tech and other sustainable solutions.

In 2016, Richard founded IMPACT X, The Impact Business Index, which today is an online platform that provides insight in Nordic enterprises with a solution to make the world a better place as their core business, combined with a financial return.

Kai HockertsProfessor of Social Entrepreneurship
Copenhagen Business School (CBS)

Kai Hockerts is a Professor in Social Entrepreneurship at the Copenhagen Business School (CBS). In his function as Academic Lead of the Aurora Erasmus+ Project, he is also leading the CBS curriculum review initiative which analyses the degree to which CBS bachelor and master study programmes aim to teach students to recognize humanity's challenges and have the entrepreneurial knowledge to help resolve them.

Kai's primary research focus is on social entrepreneurship, impact investing, responsible management education, and corporate sustainability strategies. Kai holds a Ph.D. in Management from the University of St. Gallen (CH). Before joining CBS, Kai was an Adjunct Professor in INSEAD (F). His research has been published in the Journal of Business Venturing, Entrepreneurship Theory and Practice, Academy of Management Learning and Education, the California Management Review, the Journal of Business Ethics, the Social Enterprise Journal, the International Review of Entrepreneurship, and Business, Strategy and the Environment.

Anton Karlsson

Partner og Forretningsansvarlig
InnoSocial, Copenhagen
www.innosocial.dk



Anton Karlsson is partner and Forretningsansvarlig at InnoSocial, Copenhagen. InnoSocial provides real-time social insight to foundations, investors, stakeholders and authorities on topics that concern societal well-being, progression and better lives for people

Michael Lindfield

Director at Urban Infrastructure
Services Greater Sydney Area
Infrastructure, Australia



Michael Lindfield is an economist/ financial analyst with over thirty years experience in international sustainable urban development policy formulation and in designing the institutional and financial mechanisms to implement urban policy. He has led large and diverse teams of professionals in support of successful government and private sector investment in a wide range of infrastructure, especially environmental infrastructure. He is currently Director, Urban Infrastructure Services Ltd, focusing on providing strategic advice on sustainable urban development and finance. He has recently worked for the Asian Development Bank (ADB), the APEC Secretariat, RMIT University, the Australian Department of Foreign Affairs and Trade, and the UNHabitat.

He was previously Chair of the Urban Community of Practice and Lead Professional (Urban Development) in ADB within the Regional and Sustainable Development Department. He has a proven track record in management and policy development as Head of the Housing Department of the Institute for Housing and Urban Development Studies in the Netherlands and as Deputy Director/ Senior Research Fellow, in the Australian Housing and Urban Research Institute at the Queensland University of Technology. He has worked as a consultant for the World Bank, the Asian Development Bank and the United Nations, as well as for private sector and government agencies, in India, Thailand, Indonesia Malaysia, the Philippines, Sri Lanka, Bangladesh, Vietnam, China and Fiji as well as in a number of African, Middle East and Latin American countries. He has also had experience of working with Commonwealth, State and local governments in Australia

Laura Kemp-Pedersen

Founder ImpactINC,

Copenhagen (DK)



Laura Kemp Peersen works with purpose driven organisations focused on long-term sustainable solutions and has had the opportunity to lead teams and strategy at some of the world's most innovative tech, mobile and asset management organisations. At the start of 2020 she founded a consultancy to bring to others what she has learned helping some of the leading organisations in the world to build impact-led brands that are well positioned to attract capital. Prior to that she was CMO of LeapFrog Investments, leading external communications of the company. This work contributed to LeapFrog being recognised at no.5 on Fortune's Companies to Change the World list and raising \$750M. Prior to this she mobilised CEO's of the world's largest telecoms companies, establishing one unified social purpose for the industry, including a multi-year commitment to back the UN Sustainable Development Goals. She has extensive international experience working with Boards to develop strategic communications and advocacy platforms and has built and led teams in North America, Europe, Africa and Asia.

Mathias Lund Larsen

PhD Fellow, Sino-Danish Center of Education and Research (SDC), Copenhagen Business School, University of the Chinese Academy of Sciences, and Senior Research Consultant at the International Institute of Green Finance.



Mathias Lund Larsen is a PhD Fellow at CBS and the University of the Chinese Academy of Sciences, as part of a dual PhD program under the Sino-Danish Center of Education and Research (SDC). He has previously worked for the UN in New York, Nairobi, Bangkok, and Beijing, and has spent four years heading the international department of China's leading think tank on sustainable finance, the International Institute of Green Finance. He holds a bachelor in International Business and Politics from CBS, a dual master in IBP&CEMS from CBS and Rotterdam School of Management, and a dual master in International Development from Sciences Po Paris and Peking University.

Mathias' PhD looks into governance of green finance in China. It addresses the political, economic, and financial dynamics of governing green finance in China, from policies to effects, from domestic to overseas, and from theory to practice. The issue is addressed with an interdisciplinary approach by drawing from the fields of China studies, politics & public management, finance & economics, and sustainability issues.

Key research angles include: 1) How China's green finance governance approach differs from other countries and what the impact of the approach is on policy issuance and financial institutions. 2) How and to what extent Chinese green finance policy, since its roll-out in 2016, has changed the behavior of Chinese financial institutions. 3) How China's green finance policies affect Chinese financial institutions activities overseas.

Mikkel Munksgaard

PhD Fellow, CBS Sustainability,
Department of Management,
Society and Communication (MSC).



Through his PhD-project, Mikkel studies the development and implementation of social impact bonds and payment-by-results methods in Denmark. His work centralizes around the distinct characteristics of Scandinavian impact bonds and their role in supporting and financing public services. The research is driven by a participatory research design and is co-financed by Region Zealand.

Mikkel has earlier worked in the social finance-field both on an academic and practical level.

Ferran Torres Nadal

PhD Fellow, Entrepreneurship
Institute & Institute for Social
Innovation, ESADE, Spain.



Ferran Torres Nadal is PhD Fellow at the Entrepreneurship Institute and the Institute for Social Innovation, ESADE, Spain. His PhD advisors are Lisa Hehenberger and Tobias Hahn.

Mette Fløe Nielsen

Managing Director M.I.L. Invest
Copenhagen, Denmark



Mette Fløe Nielsen is the Managing Director of M.I.L. Invest located in Copenhagen and an active impact investor who focuses on startup and scale up businesses. Mettes investment strategy is directed at businesses with a clear usage of technology and a product or service within the areas of environment/energy or social causes.

Today Mette manages a portfolio of over thirty businesses and is actively involved in multiple investment funds, co-operations and organizations. She has several board positions and uses time on a philanthropical basis in organizations that support the startup and scaleup community in the Nordic region.

Mika Pyykkö, Director
The Centre of Expertise
for Impact Investing, Finland.



Name: Mika Pyykkö

Position: Director

Organization name: The Centre of Expertise for Impact Investing

Bio: Mika Pyykkö is the director of the Centre of Expertise for Impact Investing, which is part of the administrative organization of the Ministry of Economic Affairs and Employment of Finland. The Centre supports public sector actors in outcomes contracting, and in the development of the investing market. Previously, he was in charge of impact investing in the Finnish Innovation Fund Sitra. Based on Sitra's previous work and the Centre's current activities lead by Mika, there are currently several social and environmental impact bond projects underway or set for launch in Finland.

Karthik Varada

PhD Fellow, Impact Investing,
Gender Lens Investing, Sustainable
Finance, University of Tokyo
Tokyo, Japan



Karthik is a PhD Fellow in Gender Lens Investing, and Sustainable Finance at the University of Tokyo, Japan. He defended his thesis in May 2021.

Until 2020 Karthik worked as Project Coordinator at the Sasakawa Peace Foundation. He was among the founding members of Asia Women Impact Fund, a US\$100 million commitment to make investments advancing gender equality in Asia. Alongside developing the investment pipeline and conducting due diligence, Karthik was actively involved in delivering programs supporting women entrepreneurs, and building momentum for impact investing across Asia.

Karthik has experience working with venture capital and impact investing firms, and helped startups with social impact assessment. He holds a Master's Degree from the University of Tokyo where he developed a mathematical model to explain Social Impact Bonds. He received a Bachelors in Engineering from Indian Institute of Technology, Hyderabad.

Florence Villesèche

Associate Professor and
Academic Director of the Diversity
and Difference Platform at
Copenhagen Business School



Florence Villesèche is an Associate Professor at CBS and Academic Director of the Diversity and Difference Platform at Copenhagen Business School. Her main research interests are gender and diversity, identity, the corporate elite and networks. Since August 2019 Florence Villesèche has also held the position as Academic Director of the CBS Business in Society Platform 'Diversity and Difference'. As Academic director of the Diversity and Difference platform, she works to consolidate, advance and disseminate research on diversity and difference in order to have an impact on society through strong partnerships with policy makers, business leaders, NGOs, and public organizations. The platform brings together researchers from a broad range of disciplines, nationally and internationally, including organization studies, linguistic anthropology, cross-cultural management, philosophy, religion, sociology and economics to engage with themes such as migration and integration, cultural and linguistic diversity in the workplace, women in management, sexuality and queer studies, inclusive leadership and diversity management.

She holds a PhD and MSc in Business Administration from the University of Geneva (CH), as well as an MPhil and MA in Anglophone Studies from the University of Montpellier (F). She is a Marie Curie Alumni and received an Emerald/EFMD Highly Commended Award for outstanding doctoral research.

Stella Whittaker

PhD Fellow, CBS Sustainability,
Department of Management,
Society and Communication (MSC),
Copenhagen Business School (CBS).



Stella Whittaker is an international specialist in the field of climate change, sustainability and circular economy, working for over 30 years to a senior executive level. Over her career Stella has led large policy and delivery teams - public and private sector across the globe.

Stella's PhD is in climate finance. The Ph.D. is sponsored by Realdania and centred on scaling up innovative city solutions and the underlying governance and finance models needed to underpin this. Special interest is the conditions for both city governments and investors to stimulate a proportional response to climate change.

Stella is interested in climate finance flows and the disparity between supply and demand in investment.

Hans Henrik Woltmann,
Investment Manager,
The Social Capital Fund
Copenhagen (DK)



Hans Henrik works as an investment manager in The Social Investment Fund, which is a Danish public investment fund. He is actively involved in several Danish social impact bond-projects and the coordination of SIB-experiences across the Danish SIB-landscape.